



LEADERSHIP AT A TIME OF CRISIS IN AN UNCERTAIN WORLD

Judy Ling Wong CBE



Covid crisis trauma and isolation

Enforced reflection and a shift of fundamental values

Creative capacity and confidence for transformation

Covid and Climate Change as themes that should unite the world

The fundamental necessity for worldwide collaboration

Democracies – governments are the servants of the people



People have agency

Care and Dare to Co-create our Future

“People are the ultimate force for change”

**Community is the ground from which leaders emerge
carrying the voice of those that are affected**

“Government, organisations, business, community groups, and individuals can all work together across different sectors and at different levels using knowledge, skills and passion to shape our future.” *Judy Ling Wong CBE*





Leaders are being challenged to negotiating a portfolio of crises without dropping the ball



Relating to communities

“To” “For” “With” “As part of “



The all embracing concept
of Sustainability

Sustainability depends on:

*The Relationship of
People to Nature*

*The Relationship of
People to Each Other*

The relational character of
working with Sustainability

**“There is no such thing
as a
purely environmental initiative.**

**A so-called
purely environmental initiative
is one that
has rejected
its social, cultural
and
economic dimensions.”**

Judy Ling Wong 1987





Multiple Dimensions of the Lived Experience

“Intersectionality is simply about how certain aspects of who you are will increase your access to the good things or your exposure to the bad things in life.” *Kimberle Crenshaw*

Those that are affected should lead on setting the agenda

Potential for Leadership

**“Who we are
And
What we can achieve
depends on
How we see ourselves
against
The enormous pressure
of
How others see us”**

Judy Ling Wong CBE





Acton for Equality Diversity and Inclusion

**levels the playing field for leadership
strengthens society as a whole**



**80% of the UK's
population live in
Urban Areas**

**Today, the majority
of people, an
estimated 4 billion,
live in urban
areas. By 2050, it
could be
6 billion.....**



Habitat III

It is clear that **it is in cities where the battle for sustainability will be won or lost.**

*UN Deputy Secretary-General Amina J. Mohammed
(2017)*



Leaders lead change and provide stability

Leaders give a focus to action and societal evolution but must work about ensuring a framework of stability against which participation can effectively happen, especially against an era demanding massive transformation

- **Basic good health** is the most fundamental measure of **resilience in terms of protecting citizens and is the basis for the capacity to take action**. Linking health wellbeing and effective community action is a win-win
- **Addressing the conditions where people live work and play** is a good starting point
- **Those that are cared for care and take action**. **Examples of good practice** stimulate actions
- **Access to joy and creativity as a counterbalance** that helps to enable the **capacity of citizens to deal with massive societal transformation**
- **Leaving no one behind** underpins the security of society
- Nurture a **rising generation of young and other voices**.
- **Livelihoods and a just transition** are on the agenda.
- Noticing opportunities such as the coming wave of **green jobs to address net zero**
- **People need information** and **examples of good practice**
- **A leadership of many leaders** at different levels and against different scenarios



Attention to Structure and process

Maximising stability adaptation and contribution

Making Inclusive Policy-Making Visible

Strengthening the Policy Position

Representation

Engagement

Provision





Making Inclusive Policy-making Visible

1. Put **high profile champions** into place
2. Build the **prestige of action** for particular themes of concern
3. Sign up and make **supporter organisations and individuals** representing target groups visible
4. Use and support **representative instruments** as exemplified by Climate Reframe database Create resources and **promote named collaborative networks.**
5. Promote and make **reports and research accessible**
6. Review and co-create **updated policies and strategies**
7. Map **monetary value and benefits**



Strengthening the Policy Position

Use related and wider policy instruments and reports already in place to secure mandate and bring overarching concepts together to strengthen cross-sector policy making at different levels

- Future of Generations Act Wales
- Human Rights Act
- The 9 Protected Characteristics
- Duty to promote Race Equality
- UN Habitat New Urban Agenda
- UN Habitat Declaration of First Global Stakeholders Forum
- Recognition of lived experience, links between health, wellbeing and quality of natural and built environment, the vast societal costs of multiple deprivation, climate justice



First Global Stakeholders Forum 2019 – UN Habitat Assembly – New Urban Agenda

The New Urban Agenda embodies three guiding principles:

Guiding Principles	Actions
Leave no one behind, ensure urban equity and eradicate poverty	<ul style="list-style-type: none">▪ Providing equitable access for all, to physical and social infrastructure<ul style="list-style-type: none">- Adequate housing and shelter at the center of the agenda- Public spaces as an enabler of socio-economic function of the city▪ Recognizing and leveraging culture, diversity and safety in cities▪ Enabling and strengthening participation and enhancing liveability and quality of life.
Achieve sustainable and inclusive urban prosperity and opportunities for all	<ul style="list-style-type: none">▪ Enhancing agglomeration benefits of urbanization and avoiding land speculation,▪ Fair and equitable employment creation, productivity, competitiveness, diversification and▪ Innovation through a sustainable economic development
Foster ecological and resilient cities and human settlements	<ul style="list-style-type: none">▪ Driving sustainable patterns of consumption and production,▪ Protecting and valuing ecosystems and biodiversity, and▪ Adapting to and mitigating the impact of climate change while increasing urban systems resilience to physical, economic, and social shocks and stresses

New Urban Agenda – Leave No One Behind

Extension of SDG 11 linking environmental elements to Human Settlements

Well-being of Future Generations (Wales) Act 2015

The Essentials



Well-being of Future Generations (Wales) Act 2015

A more **equal, prosperous, resilient, healthier and globally responsible** Wales, with **cohesive communities and a vibrant culture** and thriving Welsh language... go beyond simple GDP measure towards what affects the **economic, social, environmental and cultural well-being** of Wales.

The UK-wide bill is still going through Parliament



*Structural Actions for enabling Stability Adaptation and Capacity
Community facing actions to build
A Leadership of Many Leaders
and Maximise Contribution*

Theme 1 Representation
Theme 2 Engagement
Theme 3 Provision





Theme 1 Representation – nurturing and supporting leaders at all levels

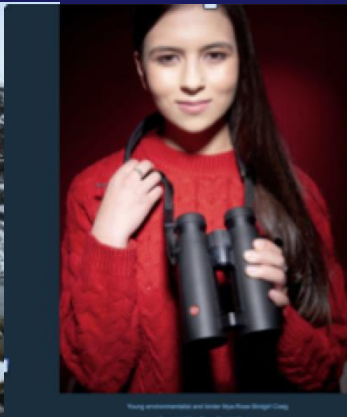
1. **A leadership of many leaders**
2. **Put high profile social justice champions into place**
3. **Co-creation of policies and details for implementation**
4. **Power sharing in decision-making**
5. **Affected communities should lead**
6. **Build visibility of community-based champions**
7. **Support local community representatives to attend high profile national and international events**

CLIMATE REFRAME

Amplifying BAME Voices in the
UK Environmental Movement

Building Visibility *We are not at Square One*

An open database of the most established 100 BAME activists and experts



Climate Reframe: A Model for building Local Visibility of Wide-ranging Community Action

Their diverse roles include the following

- Activists & Campaigners
- Business & Entrepreneurs
- Community Organisers
- Cultural Creatives
- Environmentalists & Naturalists
- Journalists & Writers
- Legal Experts
- Policy Experts & Academics
- Political Candidates
- Scientists & Technologists
- Urban Planners & Architects
- Youth Activists





Theme 2 Engagement at individual and community levels

Maximizing community contribution

1. We **benefit** and we **contribute**
2. Enable access to **enjoyment as stimulation to contribution**
3. **Promote understanding** of how actions **benefit and protect citizens**
4. **Build capacity** for making **lifestyle changes and re-imagining environments**
5. Make the **socio-cultural contexts of policy visible**
6. **Access to information** and **examples of good practice**
7. Identify and address **barriers** to participation
8. Use the **arts and programmes of activities** to engage citizens



**The Use of the Arts
enables fun
and informal education**

**Giving information is
fundamental to
community
participation**

Building the Capacity to Re-imagine Urban Spaces



The power of re-imagining opens up all our futures

Dagenham & Barking's Every One Every Day initiative has a elaborate community programme including extensive maker spaces

Reclaiming our Streets in our Neighbourhood

Greening for people and nature beyond parks and gardens



**Forward looking
Local Authorities
allow planting in
tree pits and
taking over of
pavements with
pots and other
elements as long
as a buggy or
wheelchair can
comfortably get
through**



**THE GREATEST THREAT
TO OUR PLANET
IS THE BELIEF
THAT SOMEONE ELSE
WILL SAVE IT**



Creative communication is part of leadership

An inclusive movement to unlock a vast contribution

How-to Guides. Resources. Information. Programmes of Activities. Networks.

LONDON
NATIONAL
PARK CITY*

Long... the world's first National Park City. A place to explore. A movement to join. A vision to share. Find out more and help make...



PLACES TO GO ▾

THINGS TO ENJOY ▾

MAKE A DIFFERENCE ▾

WHAT'S ON ▾

GET MORE INVOLVED ▾

ABOUT US ▾

Greener, Healthier & Wilder London – The London Mayoral Hustings
Hosted by London National Park City
With Mayoral Candidates:
Shaun Bailey, Conservative
Siebhann Benita, Liberal Democrat
Sian Berry, Green
Sadia Khan, Labour-Invited
Rosellind Roadhead, Independent
Mandu Reid, Women's Equality Party
Rory Stewart, Independent
FREE TICKETS www.nationalparkcity.london/gathering

GATHERING*
Sat 29 Feb 1030 – 430
LONDON NATIONAL PARK CITY*
Flourishing Diversity
Kabir Kaul's Rewilding London Together
Hear young people's perspectives on how we can cooperate to make London wilder together, and join the discussion.

With over 15 inspiring speakers and Q&As including:
Flourishing Diversity *Time & Talents
Every Person is Capable * Pigeolution
Cycle Sisters * Forest & Family
Way Project Gardens * Valuing Trees - Greg Packman

GATHERING* 29 FEBRUARY

Come along to our next Gathering including Greener, Healthier & Wilder London – The London Mayoral Hustings. Be inspired to help bring the National Park City to life in your life and neighbourhood.

[more >](#)



JOIN THE SCHOOLS NETWORK

A network for London's schools & educators, to help 100% of London's children become #greener #healthier #wilder

[more >](#)



READ THE 64 PAGE MAKER GUIDE

Jam packed full of examples of what makes London a National Park City – things people, communities, businesses and others are doing every day to make London greener, healthier, wilder. Be inspired to make your own difference.

[more >](#)

Charter of the LONDON NATIONAL PARK CITY*

July 2019

WE ARE WORKING TOGETHER FOR BETTER:

- 1 LIVES, HEALTH AND WELLBEING
- 2 WILDLIFE, TREES AND FLOWERS
- 3 PLACES, HABITATS, AIR, WATER, SEA & LAND
- 4 TIME OUTDOORS, CULTURE, ART, PLAYING, WALKING, CYCLING AND EATING
- 5 LOCALLY GROWN FOOD AND RESPONSIBLE CONSUMPTION
- 6 DECISIONS, SHARING, LEARNING AND WORKING TOGETHER
- 7 RELATIONSHIPS WITH NATURE & EACH OTHER

SIGN THE CHARTER

The Charter of the London National Park City sets out our aims, values and ways of working and explains how individuals, groups and organisations can take action together on our shared aims.

[More >](#)

- 1 SIGN, SUPPORT AND PROMOTE THE LONDON NATIONAL PARK CITY CHARTER
- 2 DEVISE A LONDON NATIONAL PARK CITY STRATEGY INVOLVING ALL PARTS OF THE GREATER LONDON AUTHORITY – FROM TRANSPORT, HEALTH, EDUCATION, SKILLS AND BUSINESS TO CULTURE, SPORT, HERITAGE, ENVIRONMENT AND COMMUNITY.
- 3 PROMOTE LONDON'S NATIONAL PARK CITY IDENTITY, STORY AND PRESENCE TO INSPIRE MORE PEOPLE TO ENJOY LONDON'S GREAT OUTDOORS AND HELP MAKE LONDON GREENER, HEALTHIER AND WILDER.
- 4 CONNECT LONDONERS TO SHARE SKILLS, TRAINING, KNOWLEDGE, BEST PRACTICE, IDEAS, HOPES AND DREAMS BY SUPPORTING SEASONAL CITY-WIDE NATIONAL PARK CITY GATHERINGS.
- 5 PROTECT AND INCREASE LONDON'S GREEN, BLUE, PUBLIC, WILD, OPEN SPACES AND IMPROVE THEIR QUALITY, QUANTITY, SAFETY, CONNECTIVITY AND DIVERSITY OF USE.

5 COMMITMENTS FOR THE NEXT MAYOR OF LONDON

5 top asks and 99 What If ideas on how the next Mayor can make life in London better.

[More >](#)



LONDON NATIONAL PARK CITY RANGERS

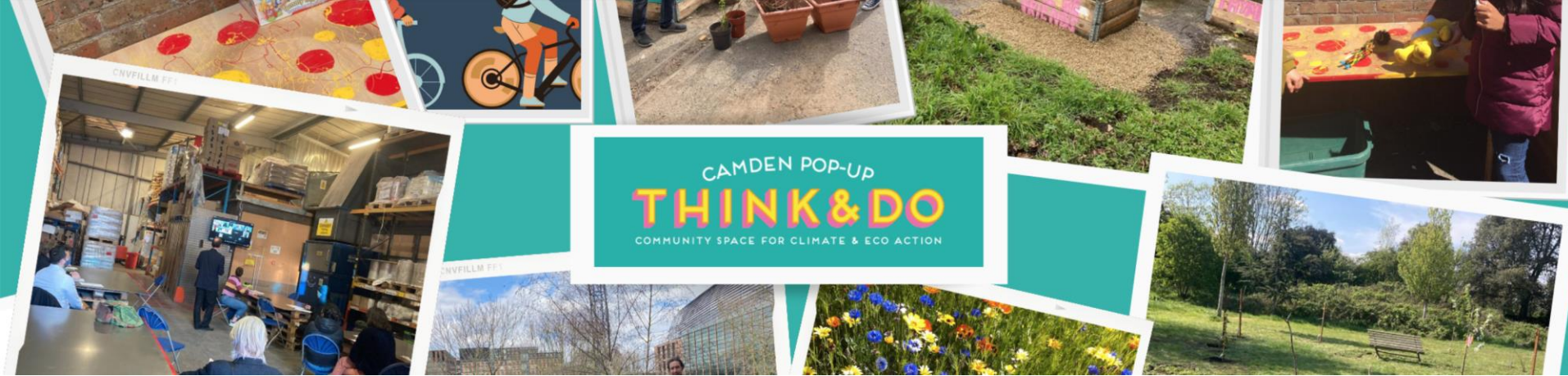
Will be working to tackle the climate and ecological emergencies while improving people's health and wellbeing.

[more >](#)



Theme 3 Provision Infrastructure underpinning community actions

- a. **Improve the local environment with nearby access to nature at scale** – housing grounds, green spaces, parks and gardens, allotments, streetscapes etc.
- b. **Embed diversity equality and inclusion** in policy and strategies
- c. **Establish local forums** with direct links into decision-making structures
- d. **Build partnerships** across environmental and non-environmental sectors
- e. **Provide training** for effective outreach and inreach
- f. **Co-ordinate** provision of **information** and promote **good practice**
- g. Use **citizens' assemblies**
- h. **Attention to the built environment** where disadvantaged groups live
- i. Build equal access to coming new wave of **green jobs** to achieve net zero
- j. **Establish themed networks in workplaces** for support, consultation, and advocacy



Camden's 'Think & Do' Pop Up is a community space to give the chance to come together to develop ideas and projects tackling the climate and ecological crisis. It has a **direct link into local decision-making structures.**

The creation of a new civic space is a direct follow on from Camden's **Citizens' Assembly on the Climate Crisis** held in July 2019 which resulted in 17 recommendations. At its Full Meeting on 7th October 2019, the Council unanimously agreed to take forward all of them for its Final Action Plan



*Liverpool and Manchester have great examples of
wildflower meadows on a grand scale around Social Housing
Access to Nature with improved Health and Wellbeing and support for
biodiversity*

Food Growing links us to Nature and the Outdoors and the Food Security and Adaptation and Resilience Agenda



**Myatt's Fields
Park grows and
gives away 50,000
plug plants for
allotments,
gardens and
balconies to
enable the
community to
extend the growing
and harvesting
season**



Parks can be Multifunctional for Enjoyment and informal Learning

Burgess Park is a great example with contact with nature, volunteering, community beehives, outdoor exercise classes and a state of the art BMX track



People-centered policy
set within
an integrated approach
bringing together social
cultural environmental and
economic dimensions

**underpins
a leadership of
many Leaders
working together
at many levels**

GREENPEACE


Küresel ısınmaya duyarsız kalsak,
yeryüzündeki canlı türlerinin dörtte biri yok olacak.



www.greenpeace.org.tr

**People and nature across our world
are bound together in crisis**

IF NOT  NOW - WHEN?
extinction 

ARE WE THE
LAST GENERATION?
hope 

Let us work together, with clear minds and strong hearts towards a leadership of many leaders that unlocks visionary solutions, set against maximising stability to move us through uncertain times



Contact: judy@ben-network.org.uk

https://en.wikipedia.org/wiki/Judy_Ling_Wong

www.ben-network.org.uk

Downloadable resources/publications on BEN website